

Martinez, Jerome

From: erika coleman [erikacoleman1@hotmail.com]
Sent: Monday, January 15, 2007 10:25 AM
To: Martinez, Jerome
Subject: RE: TIER PRICING

02 from Unit 1402 \$310,900 to Unit 4402 \$355,900
 03 from Unit 1503 \$295,900 to Unit 4403 \$356,900 (unit 1403 \$305,900)
 12 from Unit 1512 \$320,900 to Unit 4412 \$381,900 (Unit 1412 is \$335,900)
 13 from Unit 1512 \$239,900 to Unit 4413 \$284,900 (Unit 1413 is \$249,900)
 14 from Unit 1514 \$289,900 to Unit 4414 \$334,900 (Unit 1414 is \$299,900)
 15 from Unit 1415 \$305,900 to Unit 4415 \$350,900

Jerome Martinez
 Videojet Technologies Inc.
 1500 Mittel Blvd
 Wood Dale, IL 60191
jerome.martinez@videojet.com

This message (including any attachments) contains confidential and/or proprietary information intended only for the addressee. Any unauthorized disclosure, copying, distribution or reliance on the contents of this information is strictly prohibited and may constitute a violation of law. If you are not the intended recipient, please notify the sender immediately by responding to this e-mail, and delete the message from your system. If you have any questions about this e-mail please notify the sender immediately.
 </p>

CONFIDENTIALITY NOTICE

The information contained in this communication, including attachments is privileged and confidential. It is intended only for the exclusive use of the addressee. If the reader of this message is not the intended recipient, or the employee or agent responsible for delivering it to the intended recipient, you are hereby notified that any dissemination, distribution or copying of this communication is strictly prohibited. If you have received this communication in error, please notify us by responding to this email immediately.
 Thank you.

Communicate instantly! Use your Hotmail address to sign into Windows Live Messenger now.

1/15/2007

PAGE 01/21

VIDEJET TECHNOLOGIE

630-616-3629

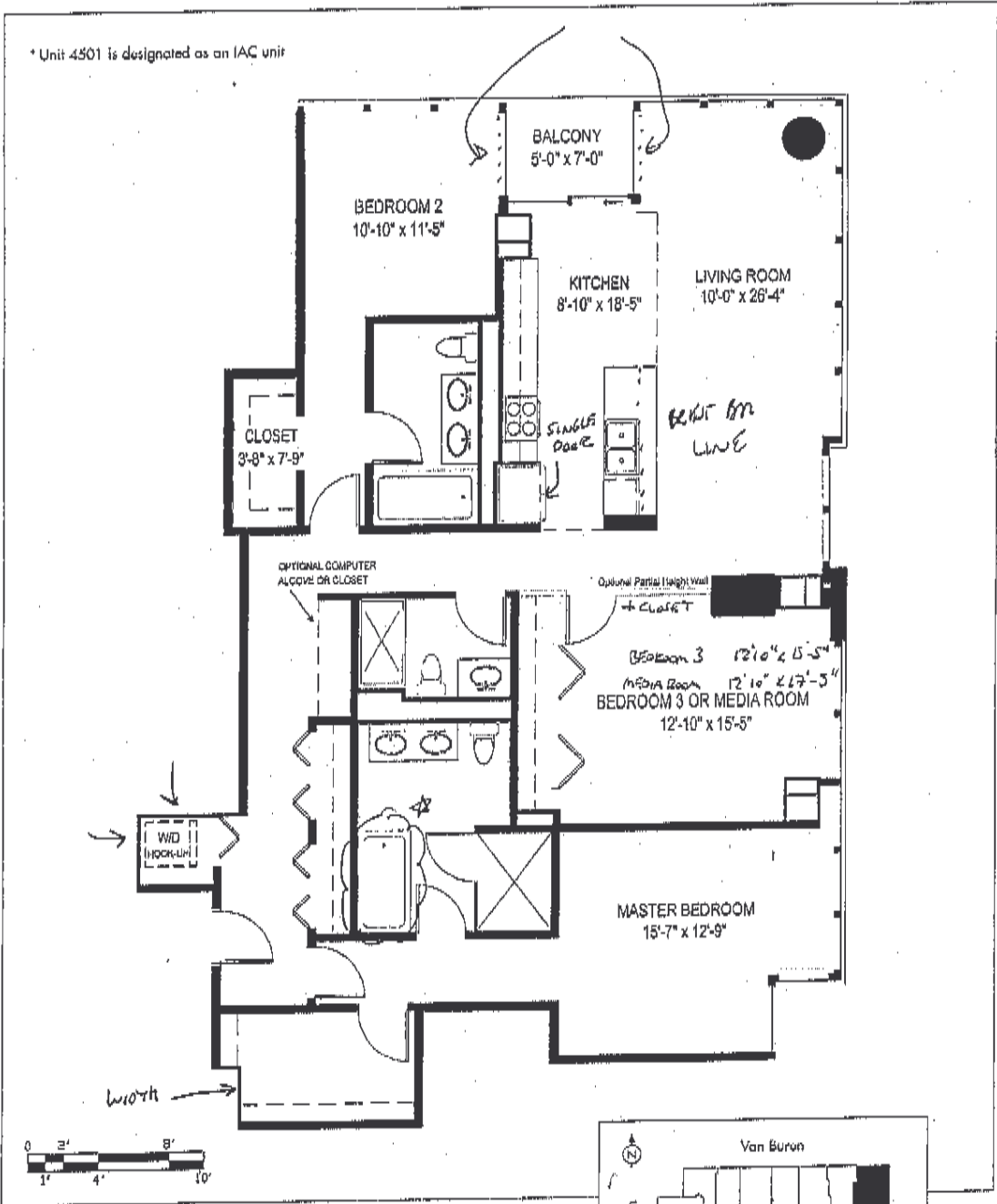
01/15/2007 16:54

PENTHOUSES 4501 & 4601 | FLOORS 45 & 46

Three Bedrooms, Three Bathrooms + Computer Alcove

1844 Square Feet + 35 Square Foot Balcony = 1879 TOTAL SQUARE FEET *Solo*

North/East Corner



Dimensions are approximate. Plans and all specifications are subject to revisions deemed advisable by builder or architect, or required by law.

Redefining Urban Living



Sales Center: 405 South Wells Street

Telephone 312.692.1741

www.235vanburen.com

PENTHOUSE 4502 | FLOOR 45

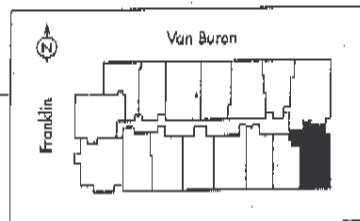
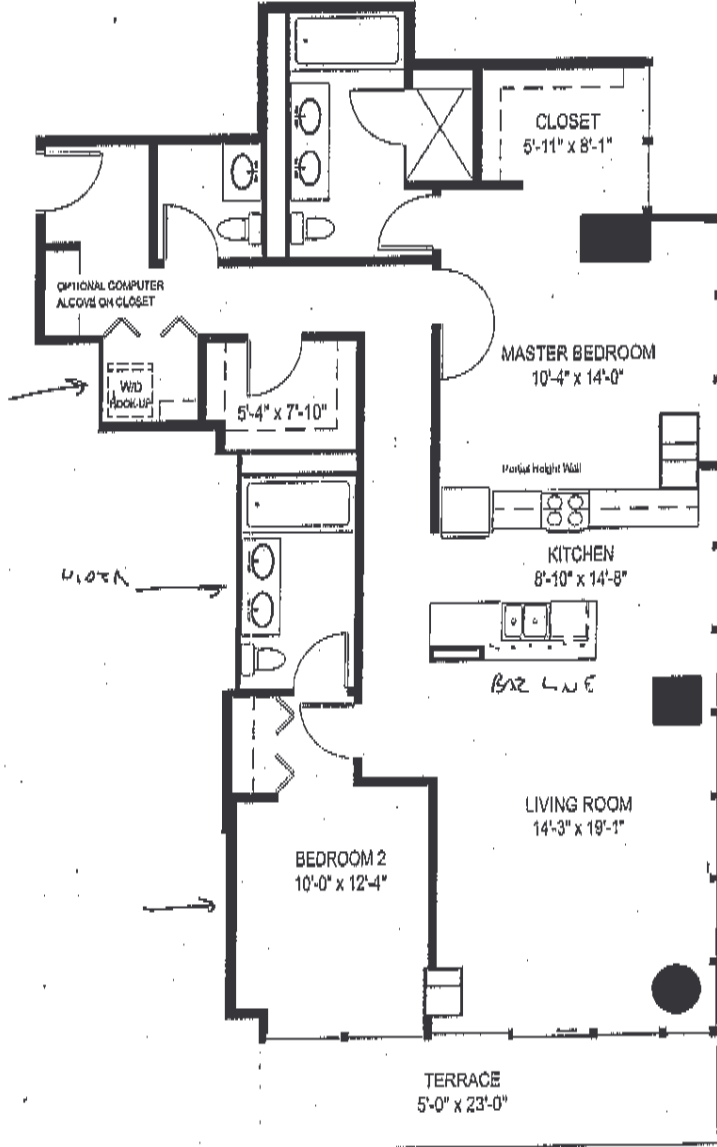
Two Bedrooms, Two and a Half Bathrooms + Computer Alcove

1417 Square Feet + 115 Square Foot Terrace = 1532 TOTAL SQUARE FEET *FoLo*

South/East Corner



* Unit 4502 is designated as an IAC unit



Dimensions are approximate. Plans and all specifications are subject to revisions deemed advisable by builder or architect, or required by law.

Redefining Urban Living



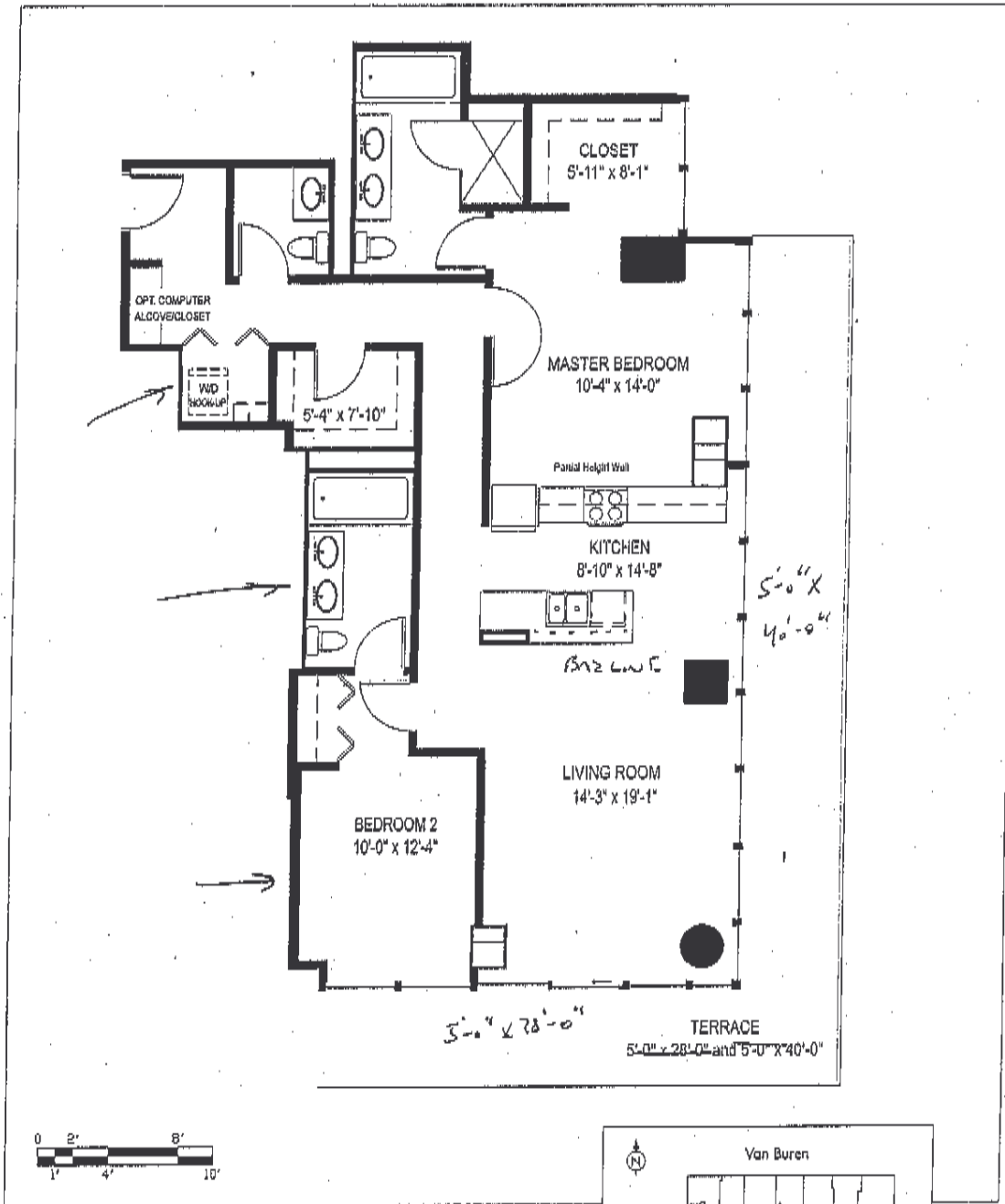
Sales Center: 405 South Wells Street | Telephone 312.692.1741 | www.235vanburen.com

PENTHOUSE 4602 | FLOOR 46

Two Bedrooms, Two and a Half Bathrooms + Computer Alcove
1417 Square Feet + 340 Square Foot Terrace = 1757 TOTAL SQUARE FEET

South/East Corner

Bald



Dimensions are approximate. Plans and all specifications are subject to revisions deemed advisable by builder or architect, or required by law.

Redefining Urban Living



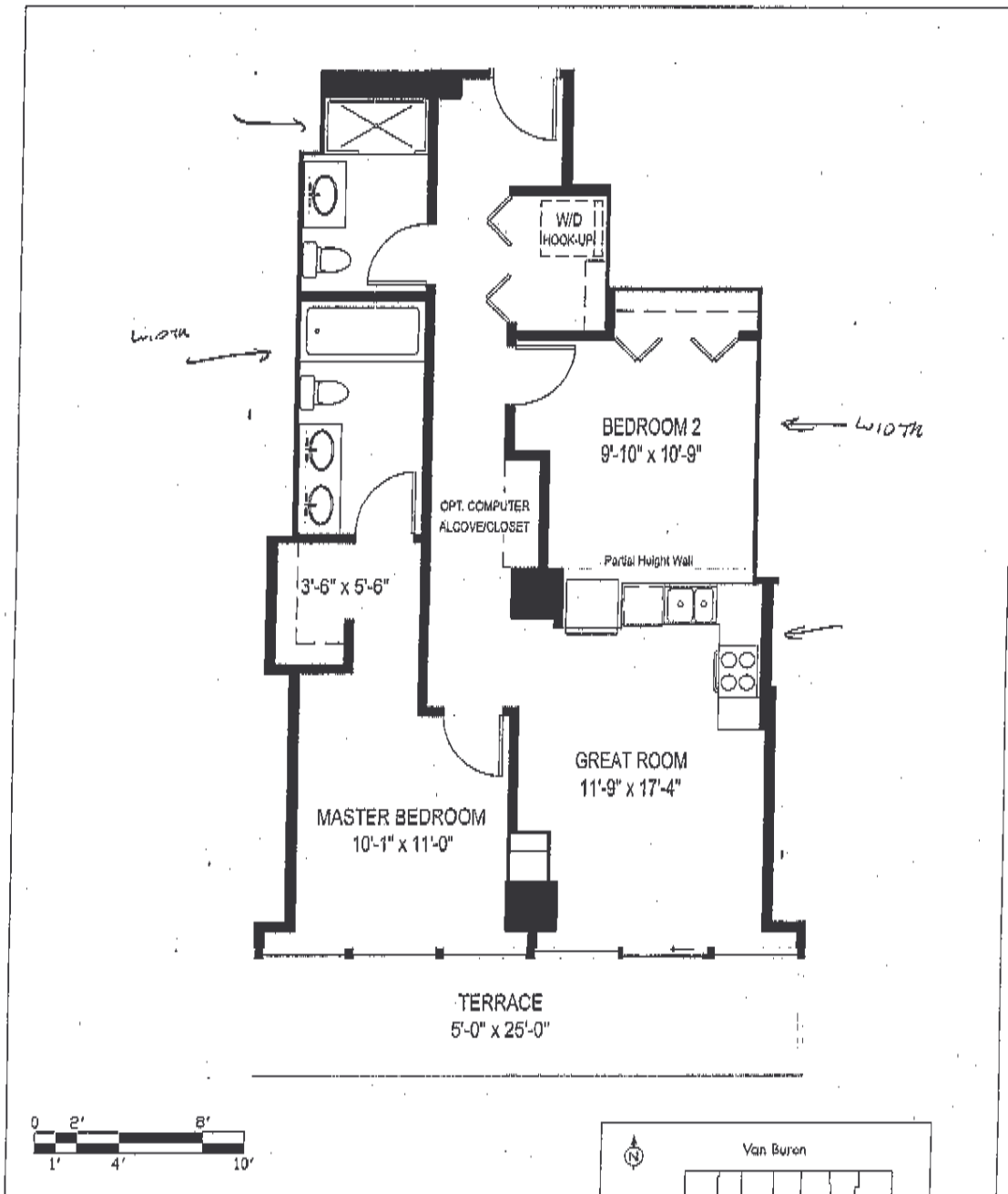
Sales Center: 405 South Wells Street | Telephone 312.692.1741 | www.235vanburen.com

PENTHOUSES 4503 & 4603 | FLOORS 45 & 46

Two Bedrooms, Two Bathrooms + Computer Alcove

891 Square Feet + 125 Square Foot Terrace = 1016 TOTAL SQUARE FEET

South Exposure



Dimensions are approximate. Plans and all specifications are subject to revisions deemed advisable by builder or architect, or required by law.

Redefining Urban Living



Sales Center: 405 South Walls Street | Telephone 312.692.1741 | www.235vanburen.com

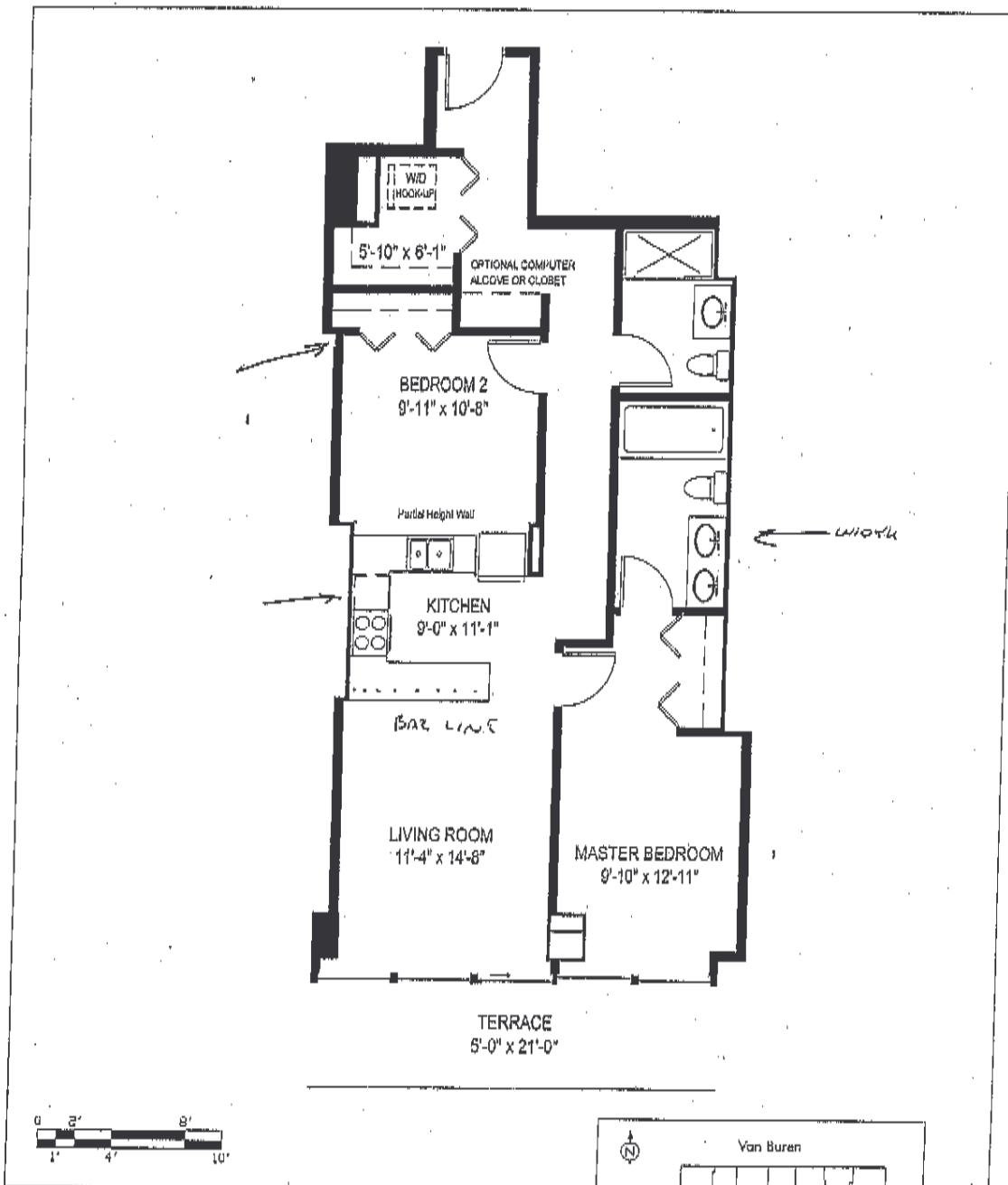
PENTHOUSES 4504 & 4604 | FLOORS 45 & 46

Two Bedrooms, Two Bathrooms + Computer Alcove

986 Square Feet + 105 Square Foot Terrace = 1091 TOTAL SQUARE FEET

South Exposure

Ballo



Dimensions are approximate. Plans and all specifications are subject to revisions deemed advisable by builder or architect, or required by law.

Redefining Urban Living



Sales Center: 405 South Wells Street

Telephone 312.692.1741

www.235vanburen.com

PENTHOUSES 4505 & 4605 | FLOORS 45 & 46

Two Bedrooms, Two Bathrooms + Computer Alcove

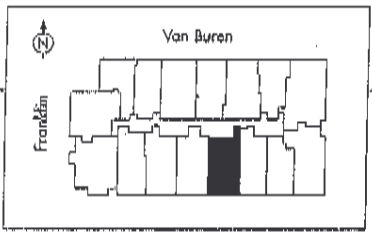
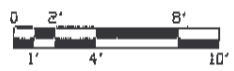
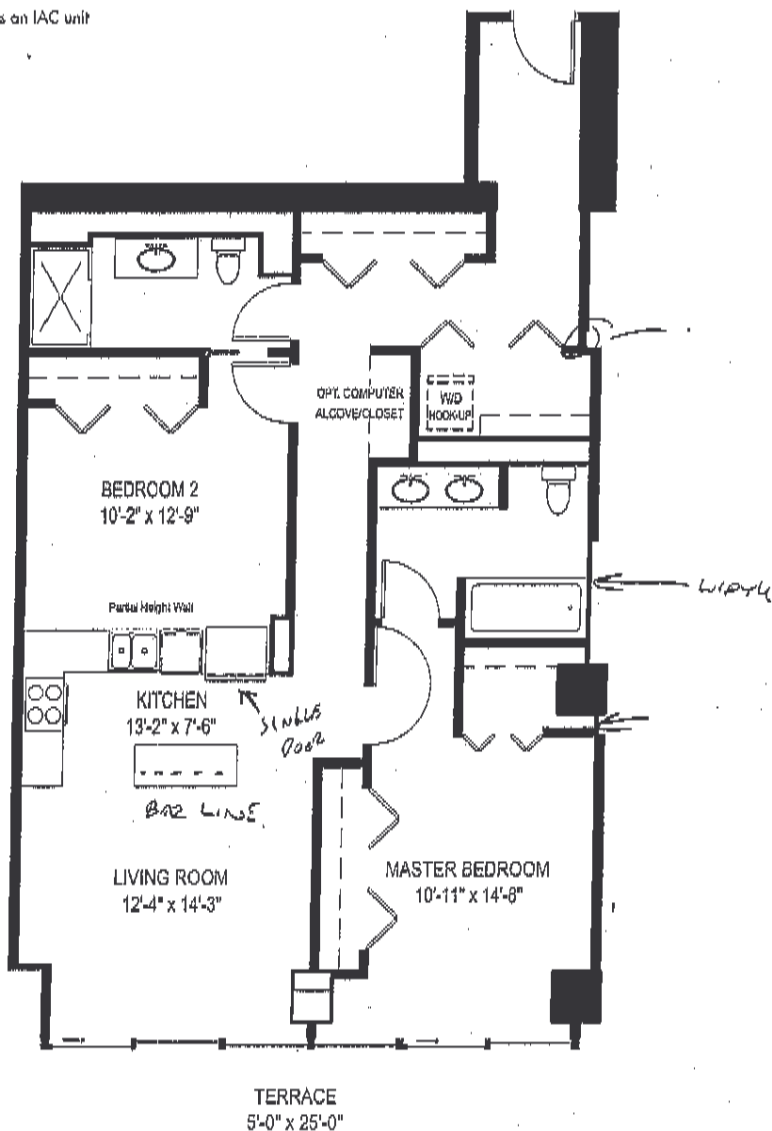
1228 Square Feet + 125 Square Foot Terrace = 1353 TOTAL SQUARE FEET

South Exposure



B.c.10

* Unit 4505 is designated as an IAC unit



Dimensions are approximate. Plans and all specifications are subject to revisions deemed advisable by builder or architect, or required by law.



Sales Center: 405 South Wells Street | Telephone 312.692.1741 | www.235vanburen.com

PENTHOUSES 4506 & 4606 | FLOORS 45 & 46

Two Bedrooms, Two Bathrooms + Computer Alcove

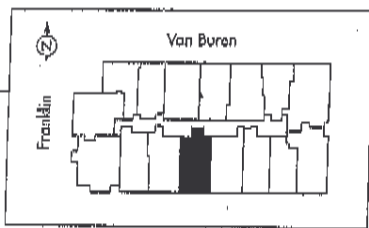
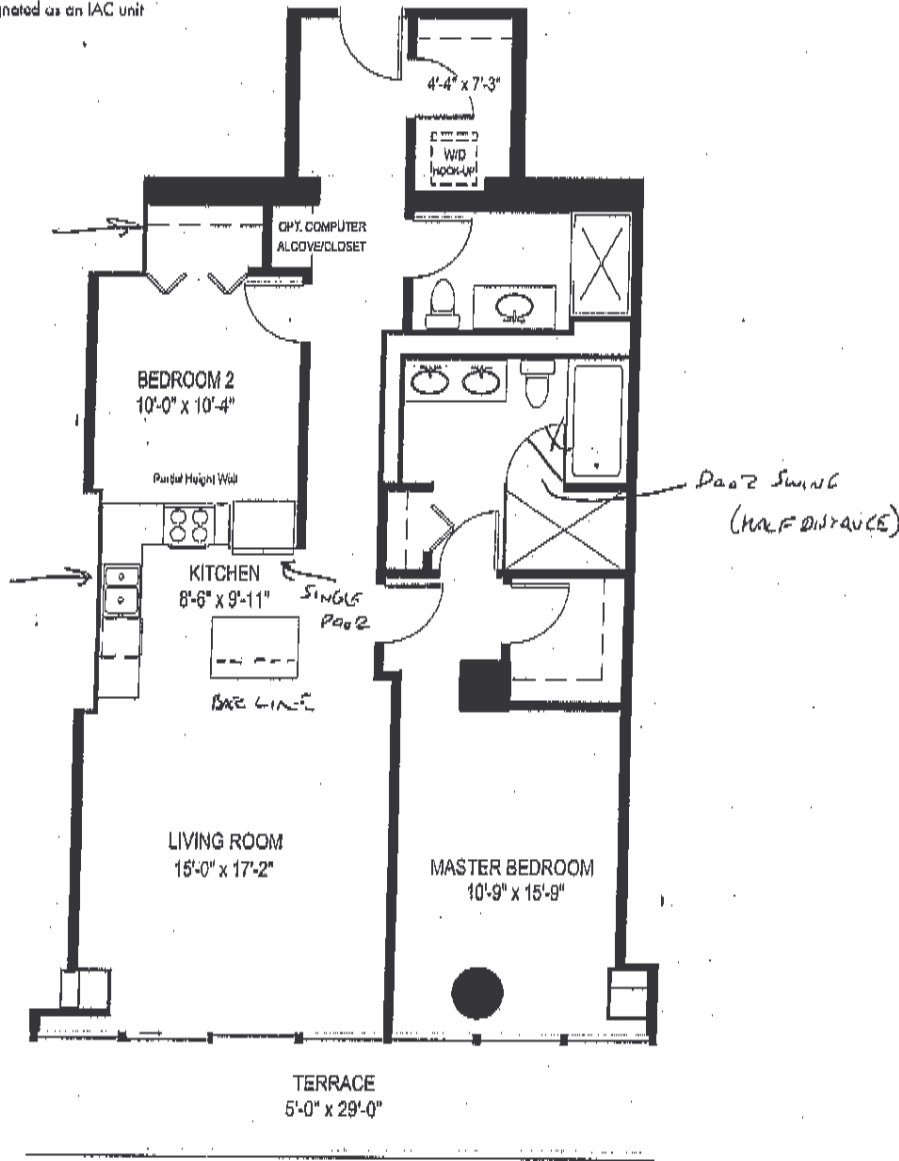
1218' Square Feet + 745 Square Foot Terrace = 1963 TOTAL SQUARE FEET

South Exposure

Bonus



*Unit 4506 is designated as an IAC unit



Dimensions are approximate. Plans and all specifications are subject to revisions deemed advisable by builder or architect, or required by law.



Sales Center: 405 South Wells Street | Telephone 312.692.1741 | www.235vanburen.com

PENTHOUSES 4507 & 4607 | FLOORS 45 & 46

Two Bedrooms, Two Bathrooms + Computer Alcove

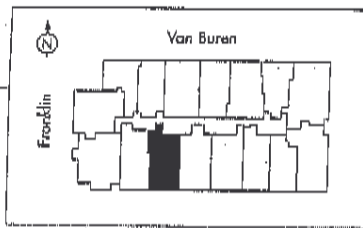
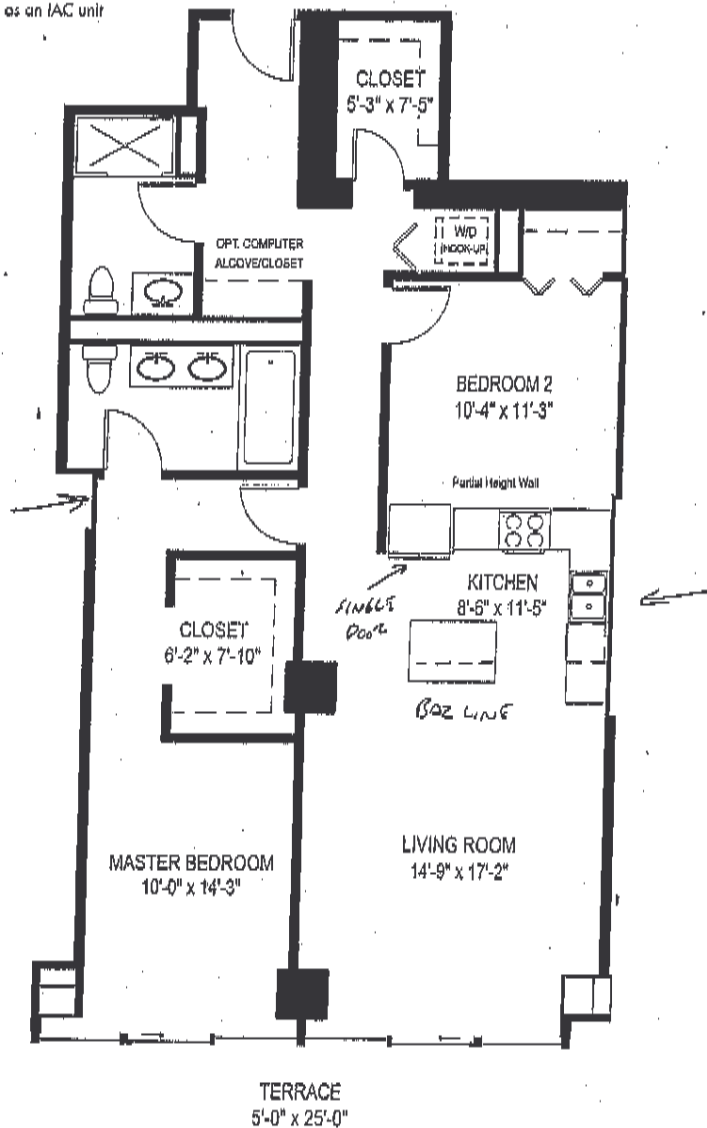
1244 Square Feet + 125 Square Foot Terrace = 1369 TOTAL SQUARE FEET

South Exposure

Be LB



* Unit 4607 is designated as an IAC unit



Dimensions are approximate. Plans and all specifications are subject to revisions deemed advisable by builder or architect, or required by law.

Redefining Urban Living



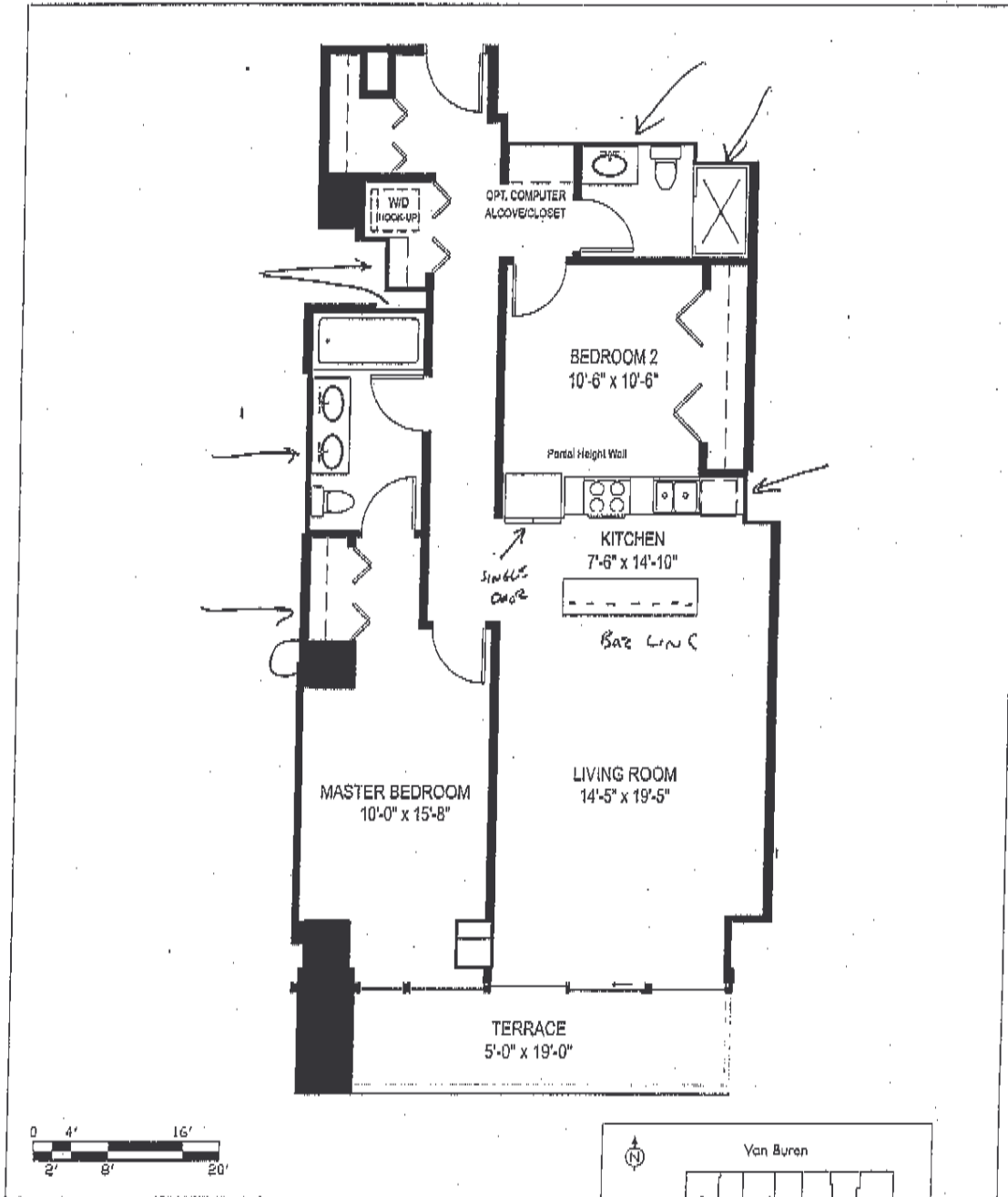
Sales Center: 405 South Wells Street | Telephone 312.692.1741 | www.235vanburen.com

PENTHOUSE 4508 | FLOOR 45

Two Bedrooms, Two Bathrooms + Computer Alcove

1155 Square Feet + 95 Square Foot Terrace = 1250 TOTAL SQUARE FEET *Pool*

South Exposure



Dimensions are approximate. Plans and all specifications are subject to revisions deemed advisable by builder or architect, or required by law.

Redefining Urban Living



Sales Center: 405 South Wells Street

Telephone 312.692.1741

www.235vanburen.com

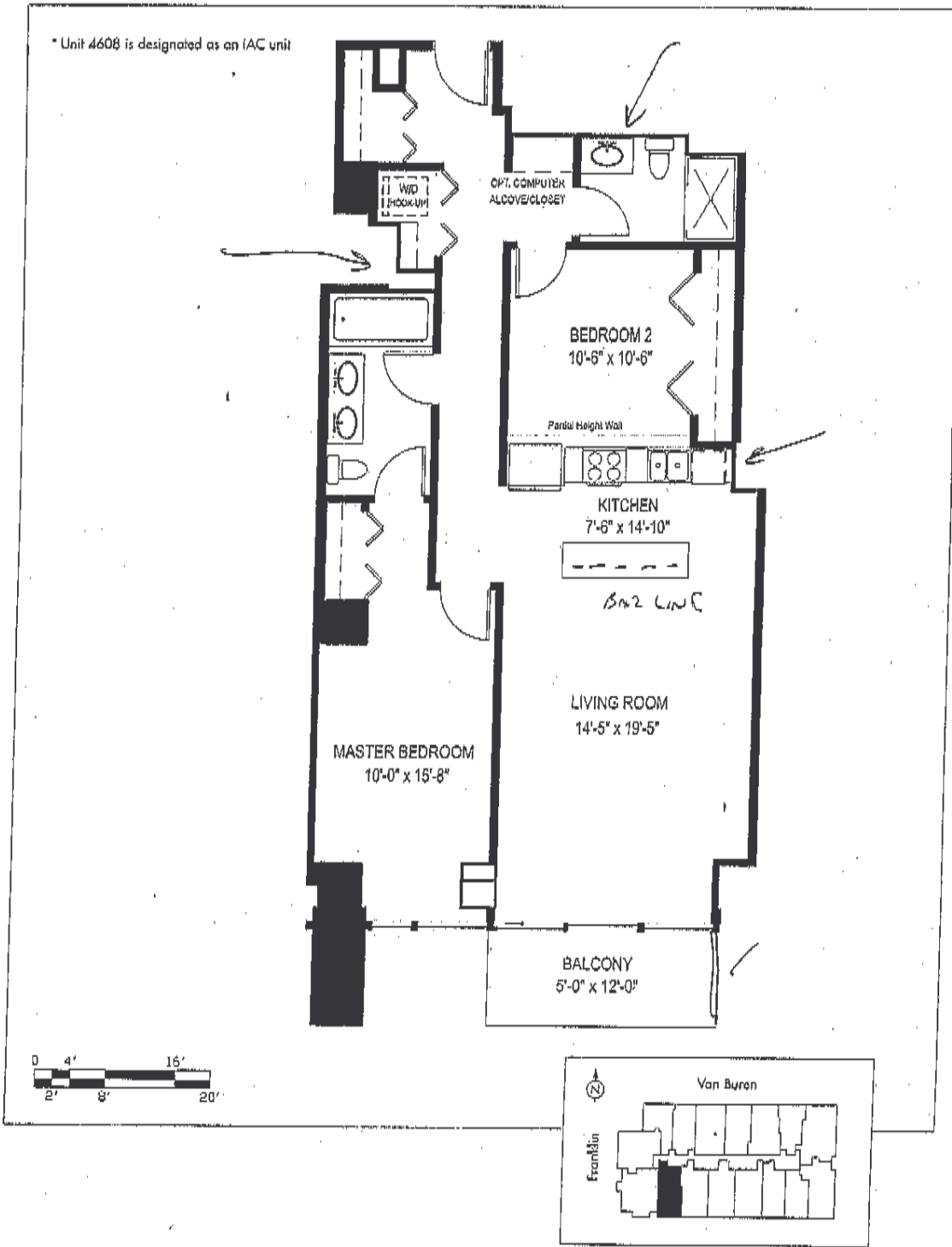
PENTHOUSE 4608 | FLOOR 46

Two Bedrooms, Two Bathrooms + Computer Alcove

1155 Square Feet + 60 Square Foot Terrace = 1215 TOTAL SQUARE FEET

South Exposure

Bcls



Dimensions are approximate. Plans and all specifications are subject to revisions deemed advisable by builder or architect, or required by law.

Redefining Urban Living



Sales Center: 405 South Wells Street

Telephone 312.692.1741

www.235vanburen.com

PENTHOUSE 4509 | FLOOR 45

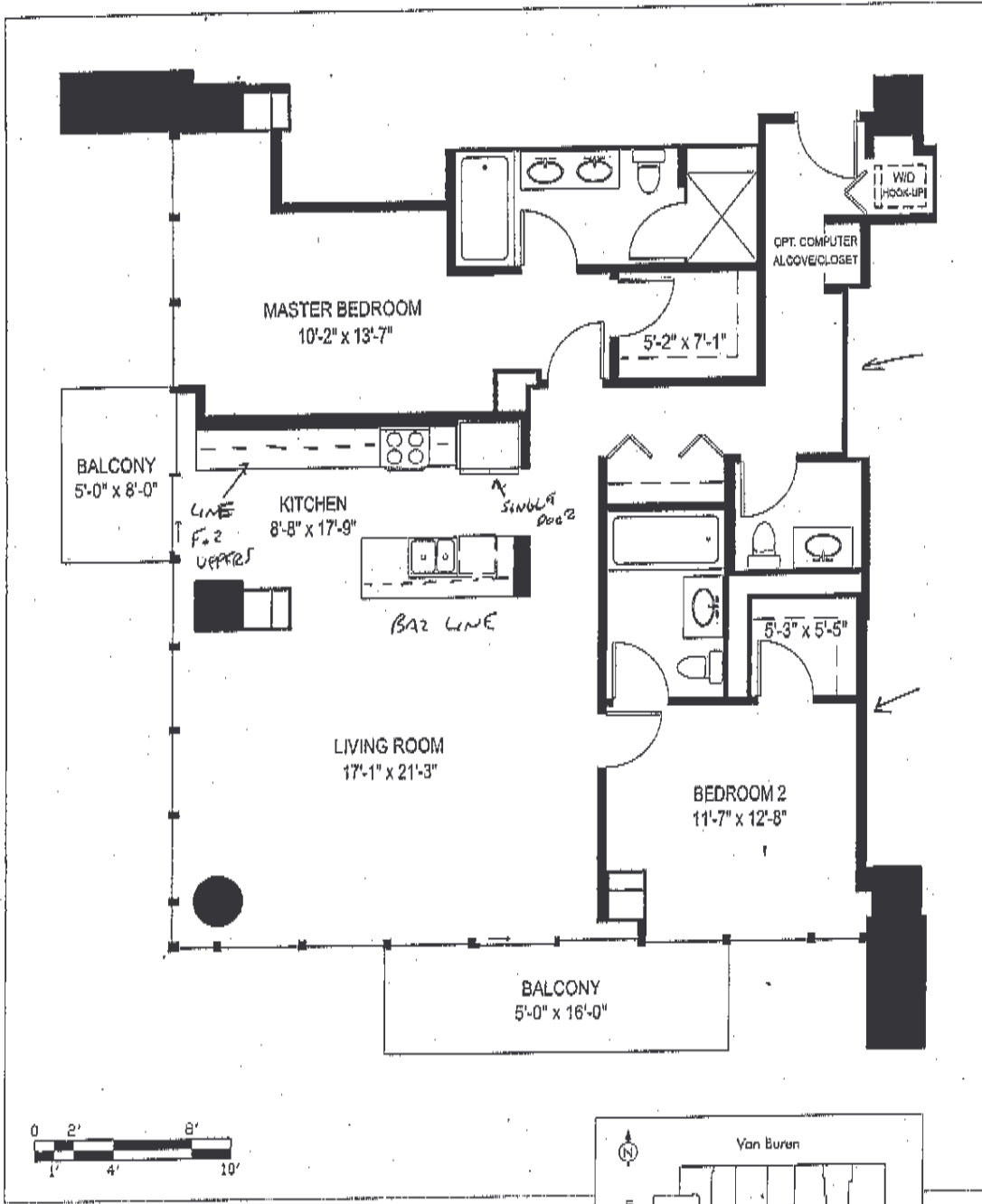
Two Bedrooms, Two and a Half Bathrooms + Computer Alcove

1,446 Square Feet + Two Balconies (80 Square Foot & 40 Square Foot) = 1,566 TOTAL SQUARE FEET

South/West Corner



Bonus



Dimensions are approximate. Plans and all specifications are subject to revisions deemed advisable by builder or architect, or required by law.

Redefining Urban Living



Sales Center: 405 South Wells Street | Telephone 312.692.1741 | www.235vanburen.com

PENTHOUSE 4609 | FLOOR 46

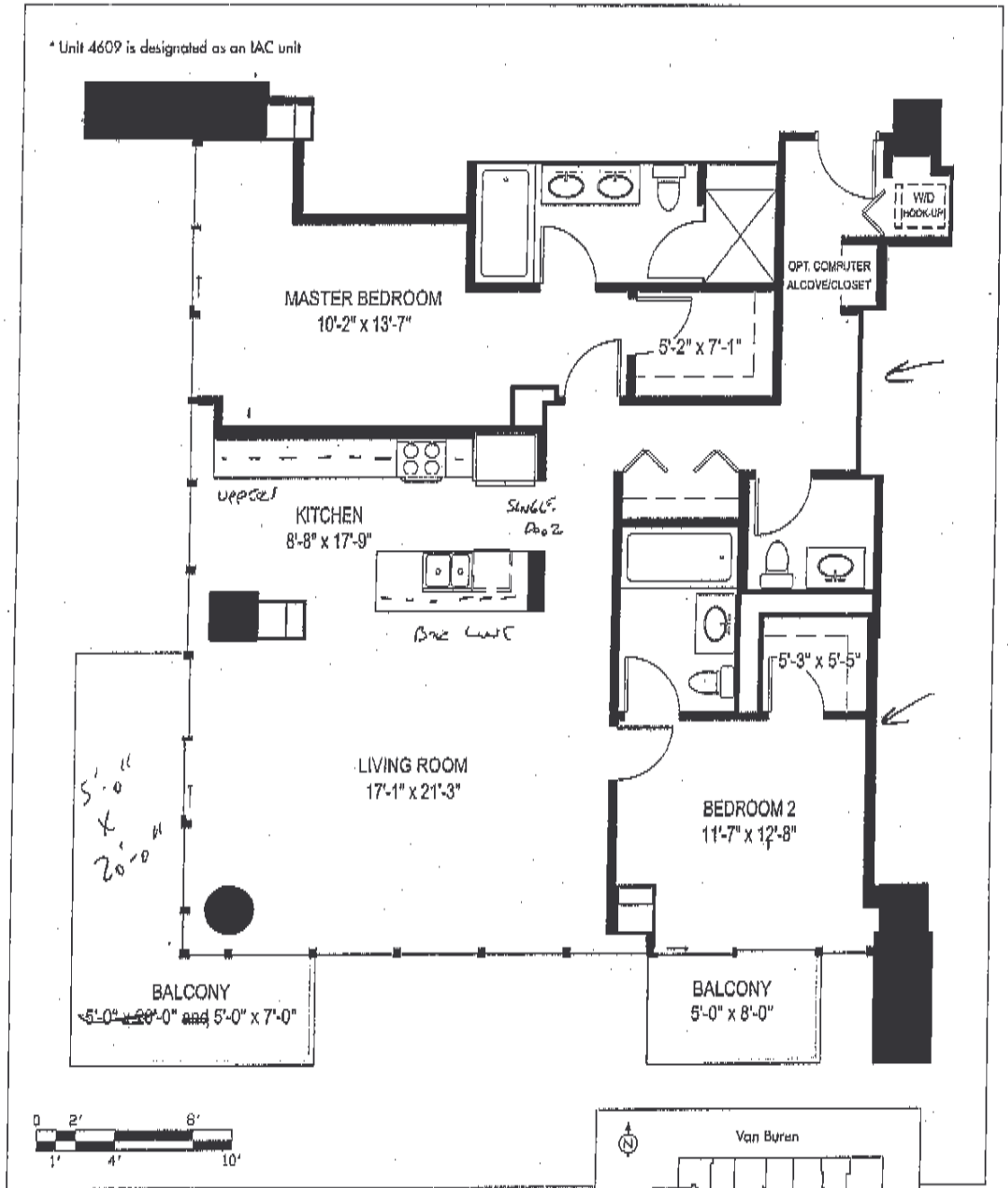
Two Bedrooms, Two and a Half Bathrooms + Computer Alcove

1,446 Square Feet + Two Balconies (135 Square Foot & 40 Square Foot) = 1,621 TOTAL SQUARE FEET

South/West Corner



1621
BOL



Dimensions are approximate. Plans and all specifications are subject to revisions deemed advisable by builder or architect, or required by law.

Redefining Urban Living



Sales Center: 405 South Wells Street

Telephone 312.692.1741

www.235vanburen.com

PENTHOUSE 4510 | FLOOR 45

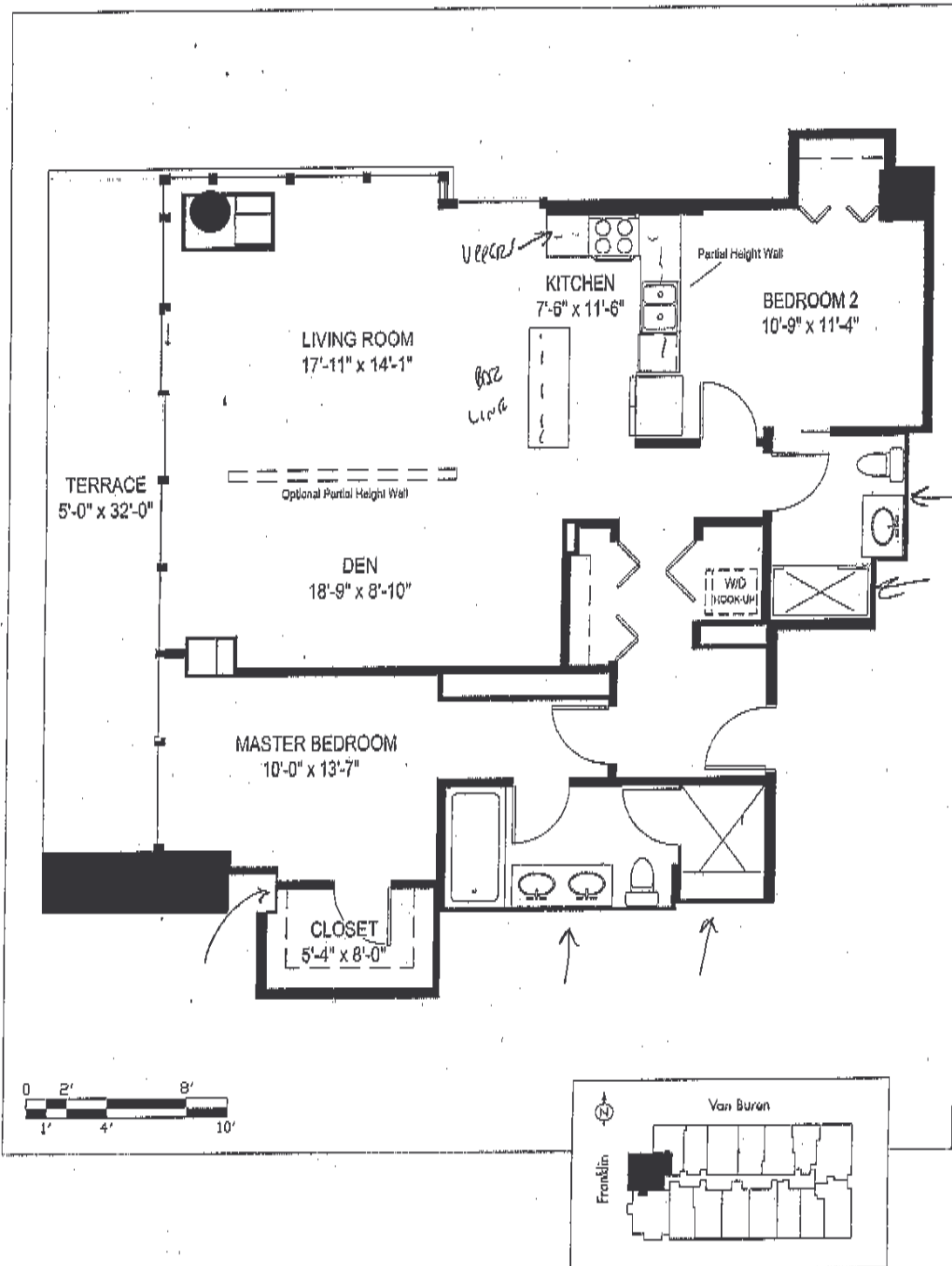
Two Bedrooms, Two Bathrooms + Den

1307 Square Feet + 160 Square Foot Terrace = 1467 TOTAL SQUARE FEET

North/West Corner



Bas



Dimensions are approximate. Plans and all specifications are subject to revisions deemed advisable by builder or architect, or required by law.

Redefining Urban Living



Sales Center: 405 South Wells Street | Telephone 312.692.1741 | www.235vanburen.com

PENTHOUSE 4610 | FLOOR 46

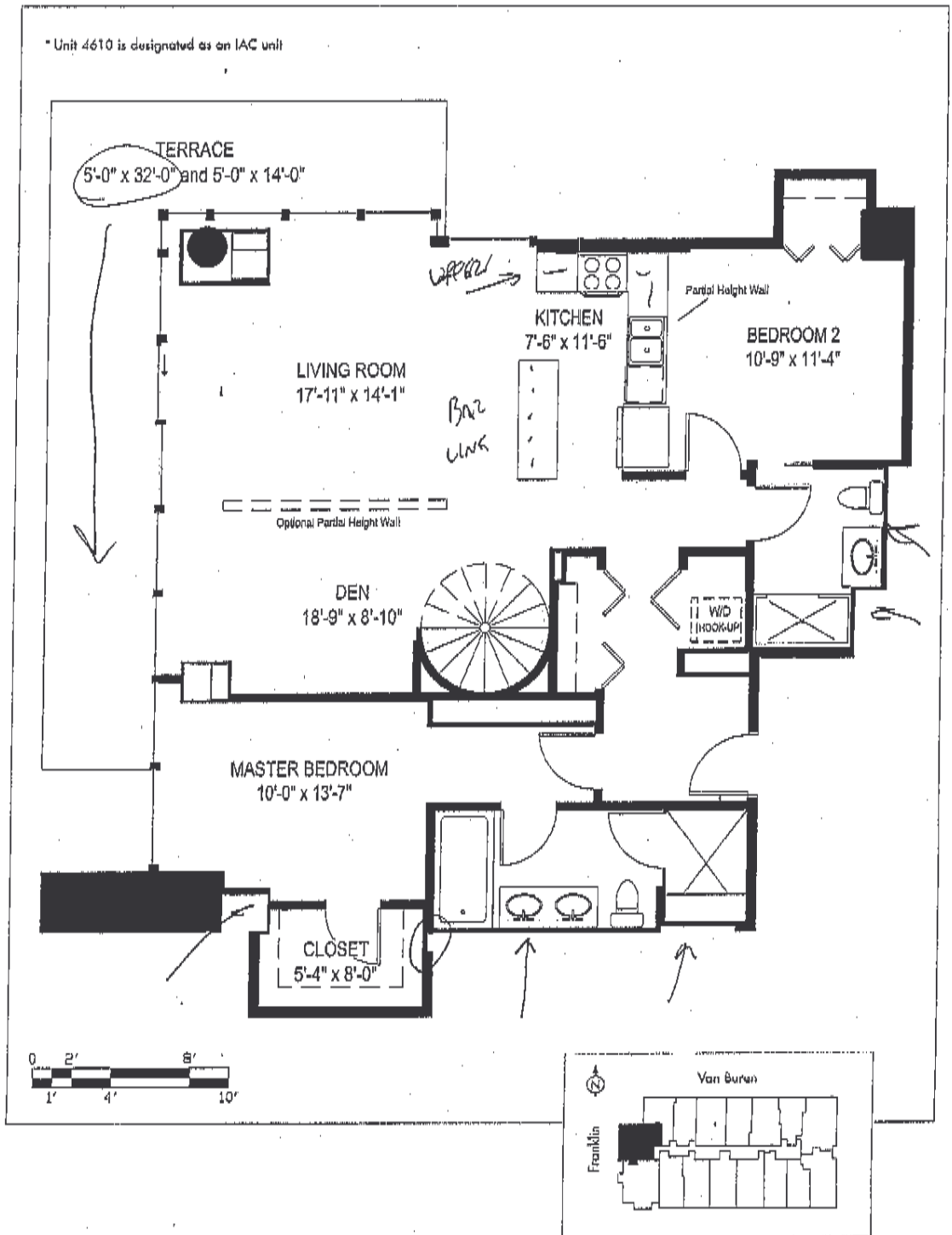
Two Bedrooms, Two Bathrooms + Den

1307 Square Foot + 230 Square Foot Terrace = 1537 TOTAL SQUARE FEET

North/West Corner



Bar



Dimensions are approximate. Plans and all specifications are subject to revisions deemed advisable by builder or architect, or required by law.

Redefining Urban Living



Sales Center: 405 South Wells Street

Telephone 312.692.1741

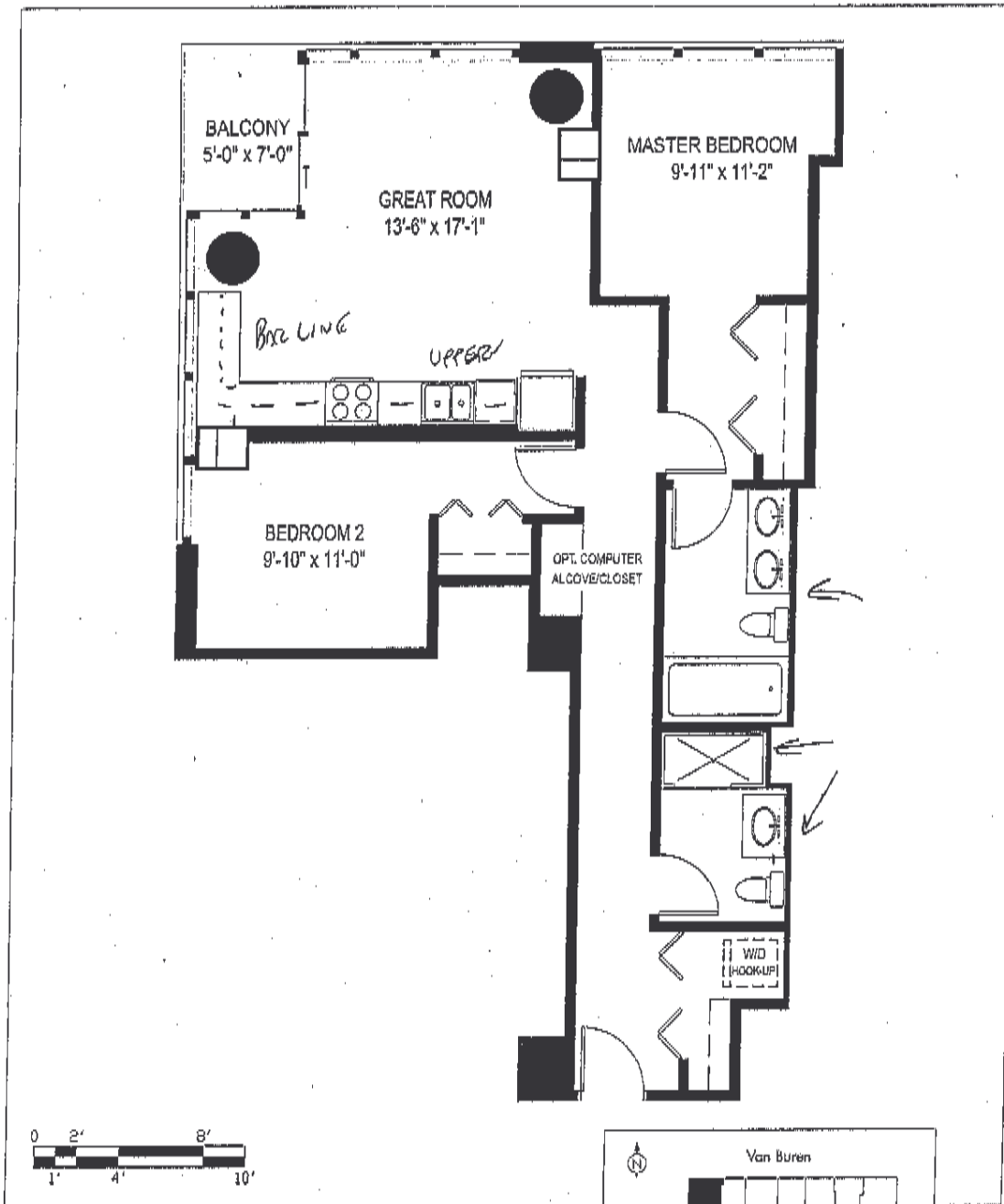
www.235vanburen.com

PENTHOUSES 4511 & 4611 | FLOORS 45 & 46

Two Bedrooms, Two Bathrooms + Computer Alcove

1027 Square Feet + 35 Square Foot Balcony = 1062 TOTAL SQUARE FEET

North/West Corner



Dimensions are approximate. Plans and all specifications are subject to revisions deemed advisable by builder or architect, or required by law.

Redefining Urban Living



Sales Center: 405 South Wells Street

Telephone 312.692.1741

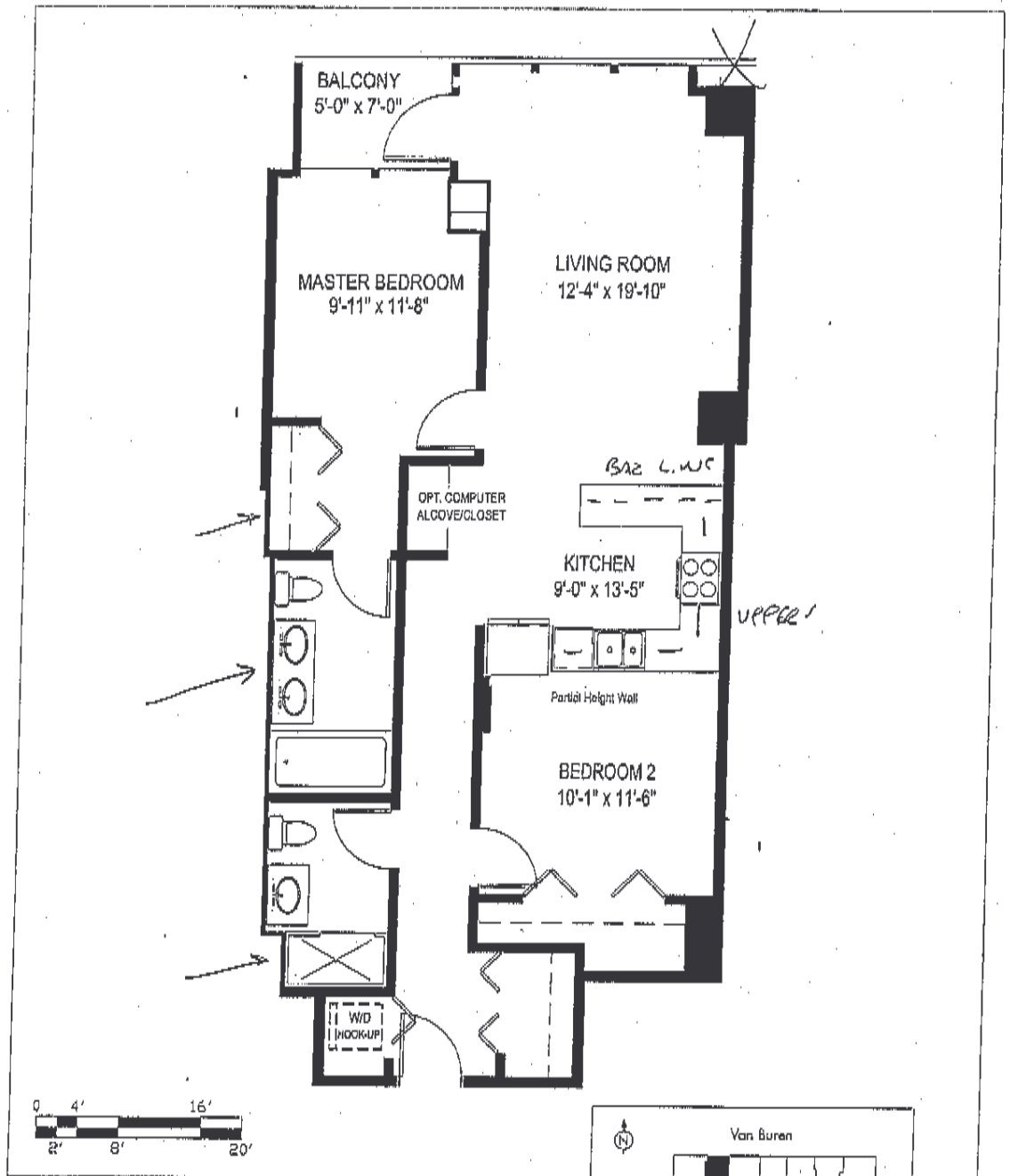
www.235vanburen.com

PENTHOUSES 4512 & 4612 | FLOORS 45 & 46

Two Bedrooms, Two Bathrooms + Computer Alcove

1039 Square Feet + 35 Square Foot Balcony = 1074 TOTAL SQUARE FEET

North Exposure



Dimensions are approximate. Plans and all specifications are subject to revisions deemed advisable by builder or architect, or required by law.

Redefining Urban Living



Sales Center: 405 South Walls Street

Telephone 312.692.1741

www.235vanburen.com

PENTHOUSES 4513 & 4613 | FLOORS 45 & 46

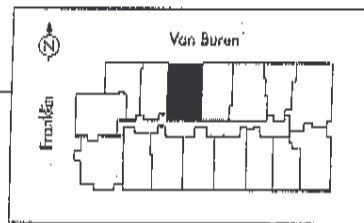
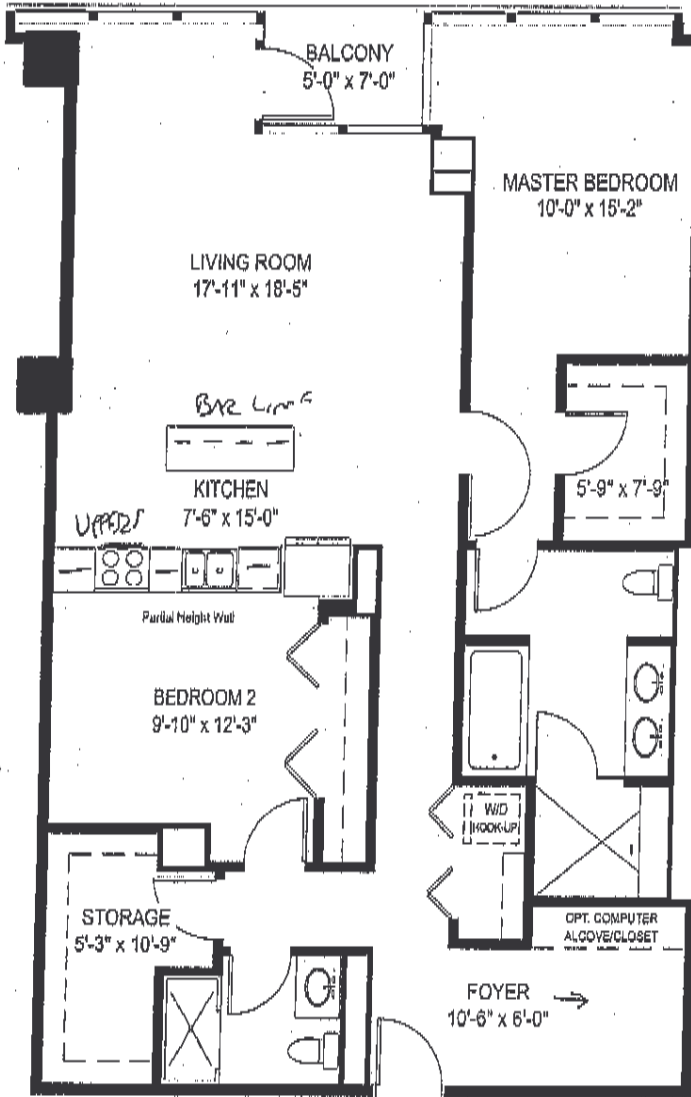
Two Bedrooms, Two Bathrooms + Computer Alcove

1429 Square Feet + 35 Square Foot Balcony = 1464 TOTAL SQUARE FEET

North Exposure



* Unit 4513 is designated as an IAC unit



Dimensions are approximate. Plans and all specifications are subject to revisions deemed advisable by builder or architect, or required by law.

Redefining Urban Living



Sales Center: 405 South Wells Street | Telephone 312.692.1741 | www.235vanburen.com

PENTHOUSES 4514 & 4614 | FLOORS 45 & 46

Two Bedrooms, Two Bathrooms + Computer Alcove

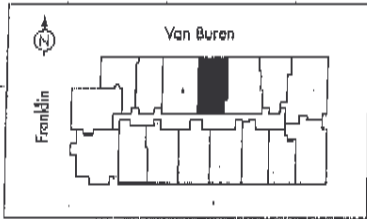
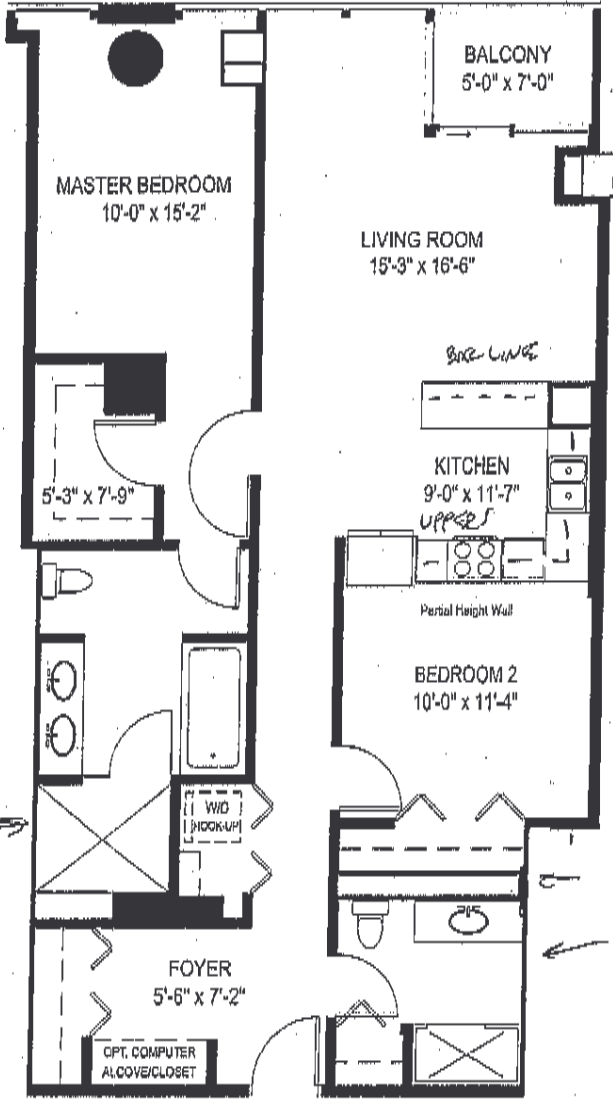
1219 Square Foot + 35 Square Foot Balcony = 1254 TOTAL SQUARE FEET

North Exposure

1254



*Unit 4514 is designated as an IAC unit



Dimensions are approximate. Plans and all specifications are subject to revisions deemed advisable by builder or architect, or required by law.



Sales Center: 405 South Wells Street | Telephone 312.692.1741 | www.235vanburen.com

1254

PENTHOUSES 4515 & 4615 | FLOORS 45 & 46

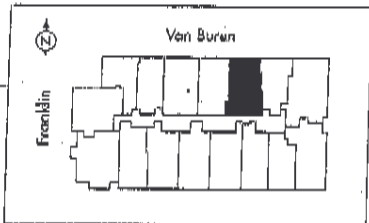
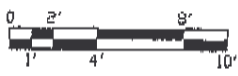
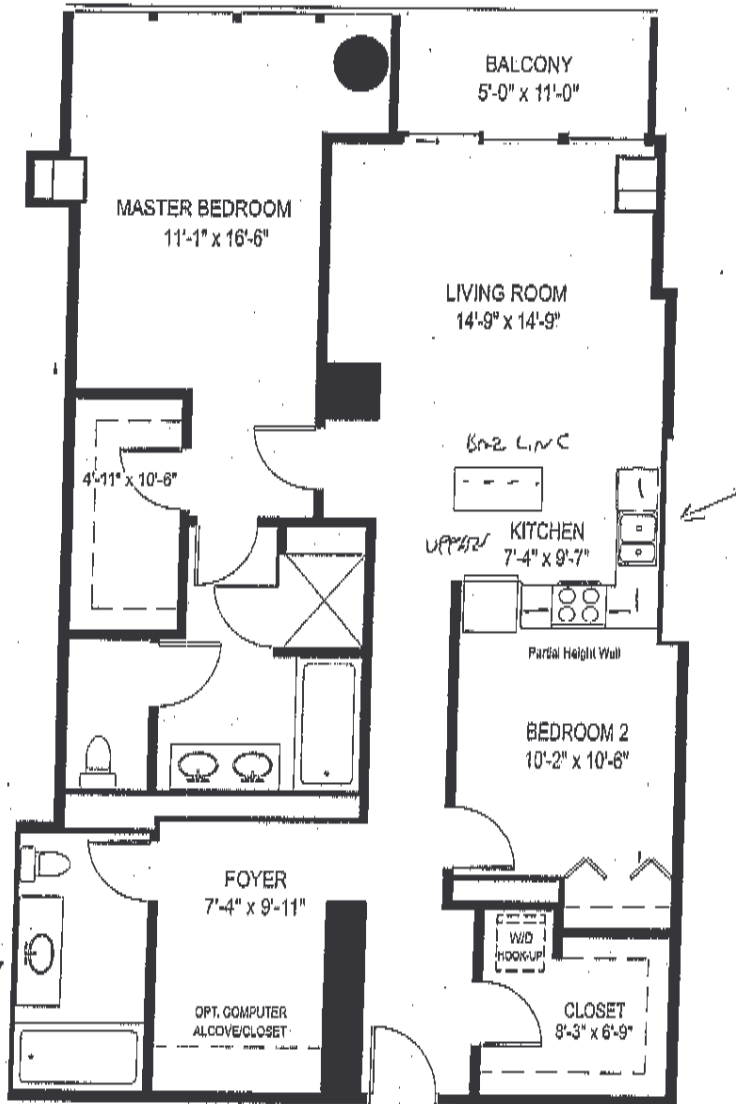
Two Bedrooms, Two Bathrooms + Computer Alcove

1373 Square Feet + 55 Square Foot Balcony = 1428 TOTAL SQUARE FEET

North Exposure



* Unit 4515 is designated as an IAC unit



Dimensions are approximate. Plans and all specifications are subject to revisions deemed appropriate by builder or architect, or required by law.



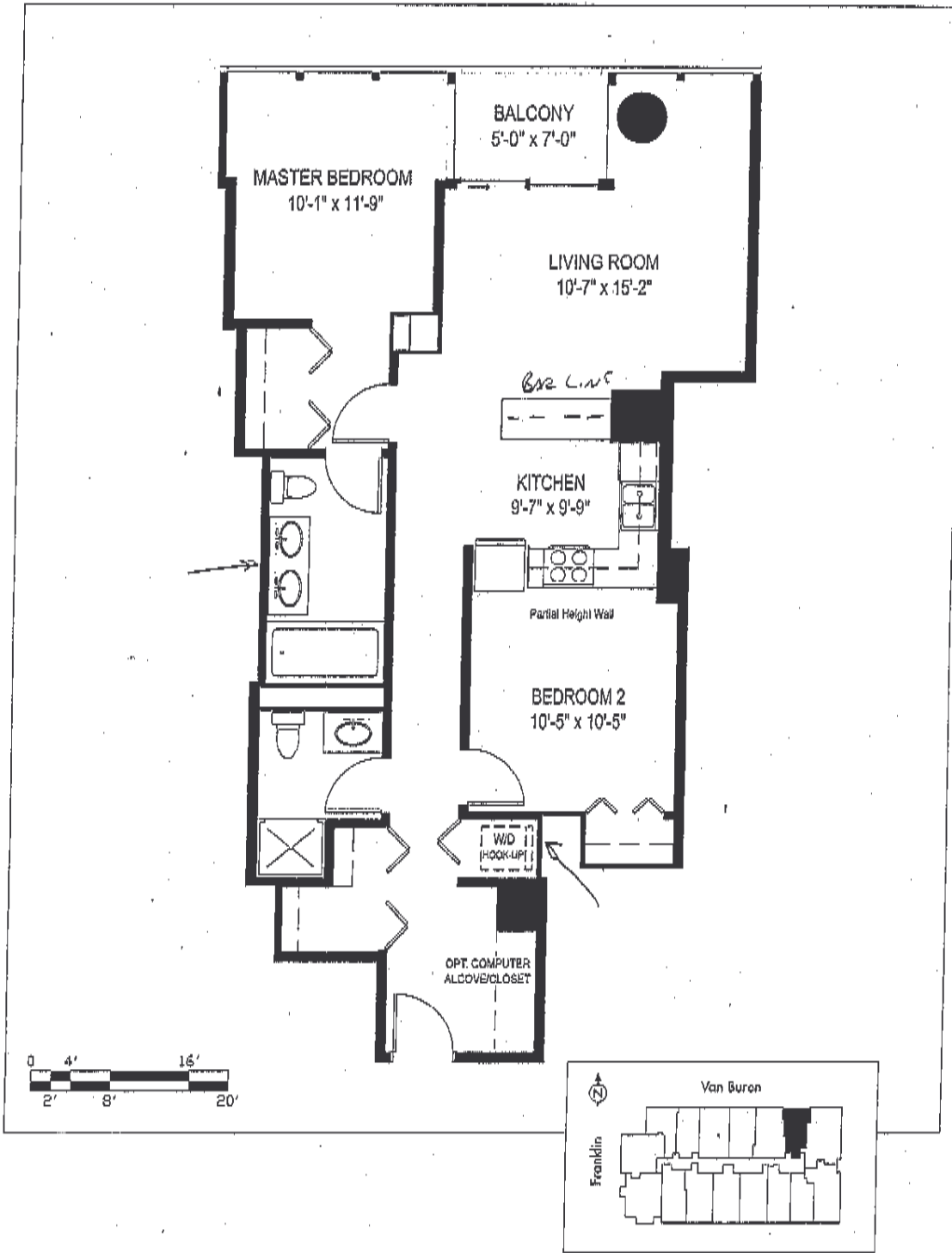
Sales Center: 405 South Wells Street | Telephone 312.692.1741 | www.235vanburen.com

PENTHOUSES 4516 & 4616 | FLOORS 45 & 46

Two Bedrooms, Two Bathrooms + Computer Alcove

1012 Square Feet + 35 Square Foot Balcony = 1047 TOTAL SQUARE FEET

North Exposure



Dimensions are approximate. Plans and all specifications are subject to revisions deemed advisable by builder or architect, or required by law.

Redefining Urban Living



Sales Center: 405 South Wells Street | Telephone 312.692.1741 | www.235vanburen.com